

2020-1429
2022-01-18

Label on the device:

DYSON PURIFIER HUMIDIFY + COOL

DOMESTIC
REGISTRATION NO. 34316
PEST CONTROL PRODUCTS ACT

READ LABEL AND OPERATING MANUAL BEFORE USING.

Kills 99.9% of bacteria in humidified water

KEEP OUT OF REACH OF CHILDREN.
See Operating Manual for additional Precautions and Warnings.

DYSON CANADA LIMITED
312 Adelaide Street West 7th Floor
Toronto, Ontario
M5V 1R2
CANADA
(312) 846-7797

User manual:

dyson purifier humidify+cool

Dyson purifier humidify plus cool

User manual

DOMESTIC

REGISTRATION NO. 34316

PEST CONTROL PRODUCTS ACT

READ LABEL AND OPERATING MANUAL BEFORE USING.

Kills 99.9% of bacteria in humidified water

KEEP OUT OF REACH OF CHILDREN.

See Operating Manual for additional Precautions and Warnings.

DYSON CANADA LIMITED

312 Adelaide Street West 7th Floor

Toronto, Ontario

M5V 1R2

CANADA

(312) 846-7797

This appliance contains an UVC emitter.

Unintended use of the appliance or damage to the housing may result in the escape of UVC radiation.

Do not stare at the light source. UVC radiation may, even in little doses, cause harm to the eyes and skin.

Do not attempt to modify or disassemble the UV-C emitter.

PRECAUTIONS

WARNING

THE APPLIANCE AND THE REMOTE CONTROL BOTH CONTAIN MAGNETS.

1. Implanted medical devices such as pacemakers and defibrillators may be affected by strong magnetic fields. If you or someone in your household has an implanted medical device or defibrillator, avoid placing the remote control in a pocket or near to the device.

2. Credit cards and electronic storage media may also be affected by magnets and should be kept away from the remote control and the top of the appliance.

TO REDUCE THE RISK OF FIRE, ELECTRIC SHOCK, OR INJURY:

3. This appliance is not intended for use by persons (including children) with reduced physical, sensory or mental capabilities, or lack of experience and knowledge, unless they have been given supervision or instruction by a responsible person concerning use of the appliance to ensure that they can use it safely. Cleaning and user maintenance should not be performed by children without supervision.

4. Do not allow to be used as a toy. Close attention is necessary when used by or near children. Children should be supervised to ensure that they do not play with the appliance.

5. This appliance must only be supplied at safety extra low voltage corresponding to the marking on the base. Dyson recommends that this appliance is only to be used with the power supply unit provided with it.

6. Disconnect power or unplug before removing dust from the appliance or replacing a filter. For other maintenance, refer to the 'Deep cleaning your machine' and 'Filling the water tank' sections for details.

7. Do not use this appliance if it has been dropped or if it has visible signs of damage.

8. Contact the Dyson Helpline when a service or repair is required. Do not disassemble the appliance as incorrect reassembly may result in an electric shock or fire. Do not attempt to modify or disassemble the UV-C emitter.

9. Do not use outdoors or on wet surfaces and do not handle any part of the appliance or plug with wet hands.

10. Do not put any objects into openings or the inlet grille. Do not use with any openings blocked; keep free of dust, lint, hair, and anything that may reduce airflow.

11. Use only cleaning agents recommended by Dyson.

12. Keep the appliance away from flammable liquids, vapours, air fresheners and essential oils.

13. Keep out of direct sunlight.

14. Always plug directly into a wall socket. Never use with an extension cable as overloading may result in the cable overheating and catching fire.

15. Always carry the appliance by the base, do not carry it by the loop amplifier.

16. Always use this appliance on a horizontal and stable surface.

17. Do not use this appliance if it has been damaged or submerged in water.

18. Keep this appliance and cable away from heated surfaces. Do not position the cable under furniture or appliances.

19. To avoid a tripping hazard wind the cord when not in use.

20. Do not run cord under carpeting. Do not cover cord with throw rugs, runners or similar coverings. Arrange cord away from traffic area and where it will not be tripped over.

21. If there is a loose fit between the plug and the socket or the plug becomes very hot, the socket may need to be replaced. Check with a qualified electrician to replace the socket.

22. When refilling, only do so as described in the Dyson User manual. Do not use hot water.

23. Do not use unless the appliance has been cleaned according to instructions.

24. Do not pour water into any openings except for the water tank.

25. This appliance contains a Class 1 laser. Unintended use of the appliance or damage to the housing may result in the escape of dangerous laser radiation. Do not stare at the light source. Laser radiation may, even in little doses, cause harm to the eyes and skin. Do not attempt to modify or disassemble the laser tube.

26. This appliance contains a UV-C emitter. Unintended use of the appliance or damage to the housing may result in the escape of dangerous UV-C radiation. Do not stare at the light source. UV-C radiation may, even in little doses, cause harm to the eyes and skin.

27. Chemical Burn and Choking Hazard. Keep batteries away from children. This product contains a lithium button/coin cell battery in the remote control unit. If a new or used lithium button/coin cell battery is swallowed or enters the body, it can cause severe internal burns and can lead to death in as little as 2 hours. Always completely secure the battery compartment. If the battery compartment does not close securely, stop using the product, remove the batteries, and keep it away from children. If you think batteries might have been swallowed or placed inside any part of the body, seek immediate medical attention. Even used batteries may cause injury.

Conformity information

CAN ICES-3 (B)/NMB-3(B)

This device complies with Industry Canada licence-exempt RSS standard(s).

Operation is subject to the following two conditions:

- The device may not cause interference, and
- The device must accept any interference, including interference that may cause undesired operation of the device. This equipment complies with Industry Canada RF exposure limits set forth for an uncontrolled environment. In order to avoid the possibility of exceeding the Industry Canada RF exposure limits, human proximity to the antenna shall not be less than 20 cm during normal operation.

DISPOSAL

- Dyson products are made from high grade recyclable materials. Recycle where possible.
- Dispose of or recycle the battery in accordance with local ordinances or regulations.
- Keep the used batteries away from children as these can still harm children if swallowed.
- Your filter units are non-washable and non-recyclable.
- Dispose of the exhausted filter units in accordance with local ordinances or regulations.
- The battery should be removed from the machine before disposal.

NOTICE TO USER: This pest control product is to be used only in accordance with the directions on the label. It is an offence under the Pest Control Product Act to use this product in any way that is inconsistent with the directions on the label.

Assembling your machine
Connecting to the Dyson Link app
Filling the water tank
Power and continuous monitoring
Information menu
Auto purify mode
Auto humidify mode
Oscillation

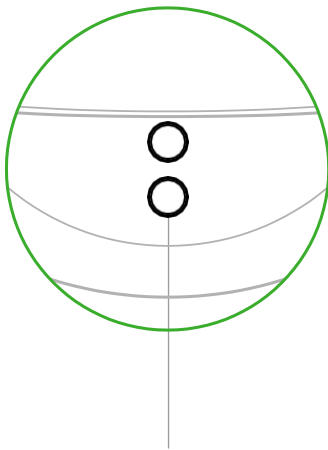
Airflow speed and direction
Sleep timer
Night mode
Deep cleaning your machine
Changing your HEPA+Carbon filter
Looking after your machine
Alerts

Getting started

Image of the machine with the location of parts labelled.

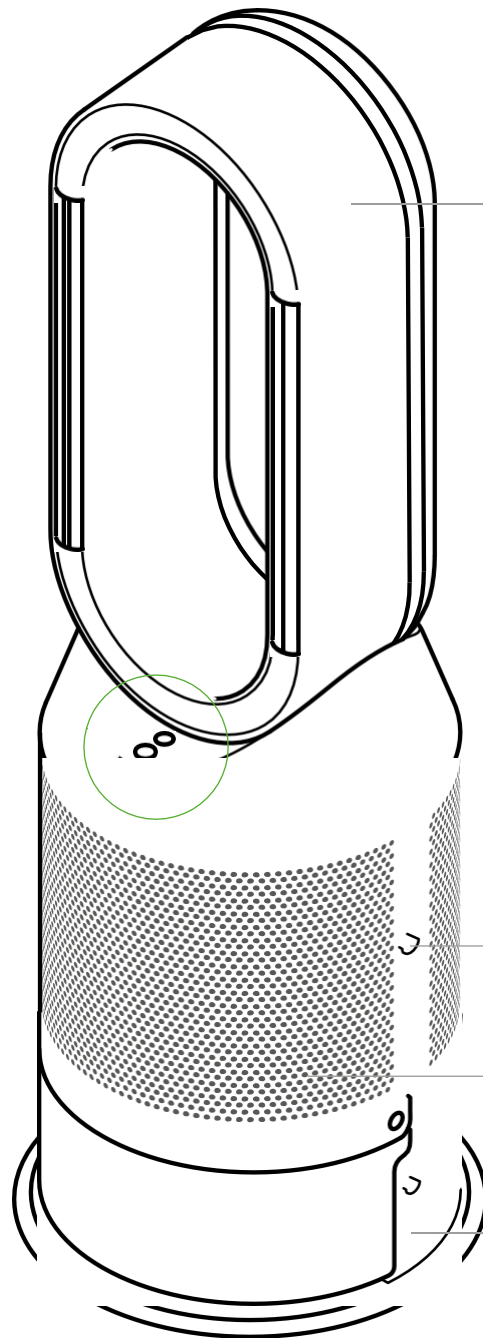
The top, of the two buttons located on the main body of the machine just below the loop amplifier, is the Deep clean cycle button.

Deep clean cycle button



Stand-by button

Below the Deep clean cycle button is the standby button.



Amplifier loop

The large oval loop making up the top of the machine.

Outer cover release buttons

Two push down buttons located either side of the main body of the machine.

Outer cover

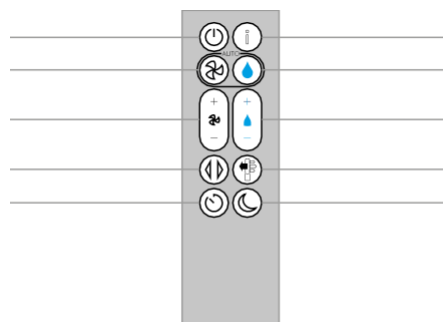
The mesh cover on the bottom of the machine is in two parts, front and back.

Water tank release buttons

The buttons to remove the water tank are located on both sides, just above the bottom of the machine.

The layout of the remote control with the standby button on the top left, the Auto purify mode button below, then the Airflow speed toggle up and down button. Below that is the Oscillation button and finally at the bottom is the Sleep timer button. On the top right-hand side is the Information menu button, then going downwards, the Auto humidify mode button, humidity control toggle button, Airflow direction and then Night mode button at the bottom.

Stand-by
Auto purify mode
Airflow speed
Oscillation
Sleep timer



Information menu
Auto humidify mode
Humidity control
Airflow direction
Night mode

Assembling your machine

Use both hands to lift your machine out of the box, by its base.

Do not lift out by the loop amplifier.

Assemble your machine with the filters that are supplied.

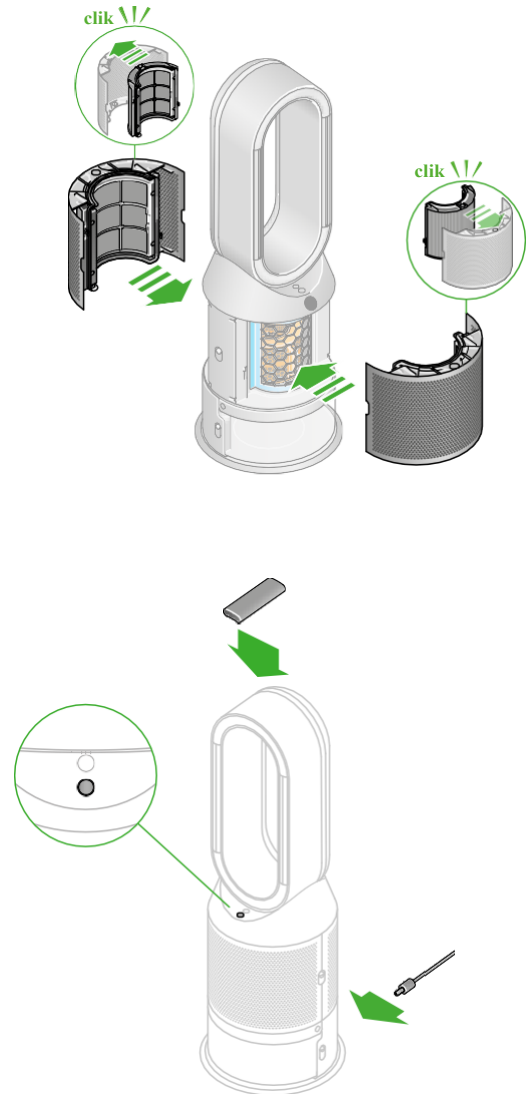
Your machine comes with a HEPA+Carbon filter. If you purchased the Dyson Purifier Humidify+Cool Formaldehyde™ your machine also comes with a permanent catalytic filter.

Push the HEPA+Carbon filter into the outer cover and position on the base. Push firmly until both outer covers click into place.

Place the remote control on top of the machine with the buttons facing down.

Plug in and switch on.

The purifying humidifying fan with the filter covers open showing a HEPA plus carbon filter located in the filter covers and a catalytic filter. Arrows demonstrate that the catalytic filter is fitted directly to the base of the machine and the filter covers will need to be assembled onto the base of the machine.



Connecting to the Dyson Link app

Take full control with the Dyson Link app and access step-by-step set up and support, control how and when your Dyson purifying fan operates, monitor air quality with visual updates and automatically keep up to date with the latest software updates.

Download the Dyson Link app from the App Store or Google Play.
Open the app and follow the on-screen instructions to create a new account.

Apple and the Apple logo are trademarks of Apple Inc., registered in the U.S. and other countries.
App Store is a service mark of Apple Inc., registered in the U.S. and other countries.
Google Play and the Google Play logo are trademarks of Google Inc.



Filling the water tank

Before you remove the water tank, make sure humidification modes are turned off and the water tank is empty.

Keep the cap dry

Keep the cap on the water tank dry when you run a Deep clean cycle or fill the tank. It contains power connections and should not be washed. If wet, wipe thoroughly with a dry cloth. Make sure the cap and connections are completely dry before refitting.

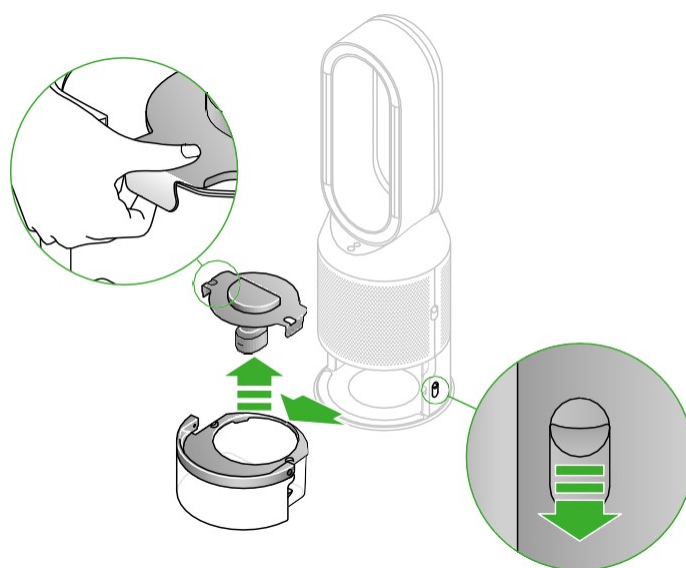
The water tank cap has two lips either side that can be pulled upwards to release the cap.

Remove the tank

Push down the Water tank release buttons on the sides of your machine.

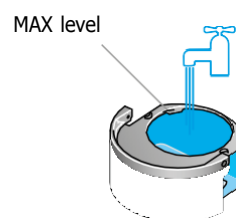
Slide the water tank out of your machine.

Carry the water tank by its handle to the tap, and unclip the cap.



Fill the tank

Fill the water tank to the Max level with cold tap water.

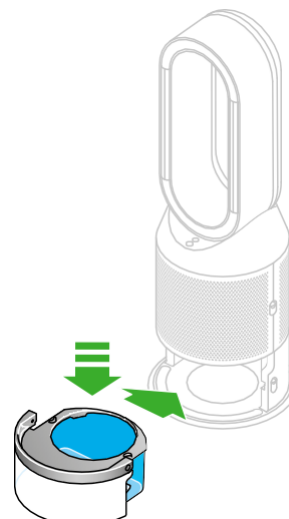


Replace the tank

Replace the cap and secure the cap clips in place.

Make sure the cap is completely dry. If wet, wipe thoroughly with a dry cloth.

Slide the water tank back into your machine until it clicks securely in place.



Power and continuous monitoring

Stand-by on/off

Press the Standby on/off button on your Dyson purifier humidifier fan or remote control to stop your machine. It will continue to monitor the air quality.

Continuous monitoring

Continuous monitoring is turned off by default. Once turned on, it will always be active until you turn it off again.

With continuous monitoring turned on, your Dyson purifier humidifier fan will gather air quality, temperature and humidity information, which is displayed on the LCD screen and in the Dyson Link app.

Continuous monitoring on/off

Press and hold the Auto mode button on the remote control for 5 seconds to turn it on. The LCD screen will indicate when continuous monitoring is on or off.

Wi-Fi Connectivity

Wi-Fi is on by default. To turn the Wi-Fi on or off, press and hold the Stand-by on/off button on your machine for 5 seconds.

Information menu

Press this button to scroll through the information being monitored by your Dyson purifying humidifying fan.

Information about air quality, temperature, humidity. Filter and evaporator levels are shown.

When a particular type of pollutant causes air quality to decrease, an icon for the pollutant will show on the LCD screen.



The remote control with the information button on the top right.

Indoor air quality - 12 seconds
Monitor the current air quality with a graph showing the last 12 seconds of data.



Particulate matter (PM10)
Larger microscopic particles up to 10 microns in size, suspended in the air we breathe. These include dust, mold and pollen.



Nitrogen dioxide and other oxidizing gases
These potentially harmful gases are released into the air by combustion, for example, the burning gas when cooking and in vehicle exhaust emissions.



Indoor humidity
The amount of water vapor in the air, shown as a percentage.

 **43%**

Particulate matter (PM2.5)
Microscopic particles up to 2.5 microns in size, suspended in the air we breathe. These include smoke, bacteria and allergens.



Volatile organic compounds
VOCs are typically odors that may be potentially harmful. These can be found in cleaning products, paints and furnishings.



Indoor temperature
Monitor the ambient temperature to help maintain a comfortable environment.

 **70°**

Indoor air quality - 24hrs
Monitor the current air quality with a graph showing the last 24 hours of data.



Filters
The remaining filter life is shown on the LCD screen and will indicate when your filters need replacing.



Evaporator
The status will show how full the evaporator is with mineral build-up and how soon a deep clean cycle is required.



Wi-Fi
The current status of connection to the Wi-Fi network.



Auto purify mode

Set your Dyson purifying humidifying fan to Auto purify mode and the on-board sensors will intelligently adjust the settings of your machine according to the air quality.

Air quality: your machine will pause when the target air quality has been reached, switching on again when the air quality levels drop.

Airflow speed: the airflow speed will increase until the target air quality and temperature have been reached.

Night mode: your machine will only run with airflow speeds from 1 to 4.

The remote control with the Auto purify button on the left hand side, below the Standby button.



Auto humidify mode

Set your Dyson purifying humidifying fan to Auto humidify mode and the on-board sensors will intelligently adjust the settings of the machine according to the temperature and humidity of your room.

Room humidity: your machine will pause when the target room humidity has been reached, switching on again when the room humidity levels drop.

Airflow speed: the airflow speed will increase until the target humidity level has been reached.

To turn off Auto humidify mode or to change the humidity levels manually, press the Humidity control button.

The remote control with the Auto humidify button on the right hand side, below the Information button.



Oscillation

Press the Oscillation button and select the angle of oscillation to 0°, 45°, 90° or Breeze mode.

Pause the oscillation at any point by pressing the Oscillation button.

Press the Oscillation button again to resume.

To reset the Oscillation direction to the center, press and hold the Oscillation button for two seconds.

The remote control with the oscillation button on the left above the sleep timer.



Airflow speed and direction

Press the Airflow speed button to increase and decrease the airflow speed.

Press the Airflow direction button to change the direction of airflow from front to back.

Change the airflow direction for your personal comfort.

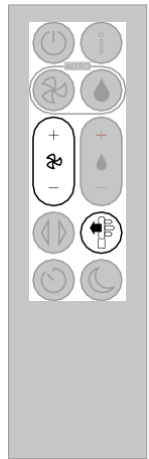
Select the Airflow direction to Fan mode for airflow from the front for purifying and cooling.

Set the Airflow direction to Backwards airflow mode, for airflow from the back for purifying without cool air.

Your machine will continue to purify and humidify (if selected) in both Fan and Backwards airflow mode.

Use your Dyson Link app to personalize your settings for Airflow speed and direction.

The remote control with the Airflow speed toggle button on the left hand side, below the Auto purify button. The Airflow direction button is on the right above the Night mode button.



Sleep timer

Your Dyson purifying humidifying fan will turn off automatically after the selected amount of time.

To set the time: press the button to scroll through the time options. Once activated, press the Sleep timer button once to see the time selected.

To cancel the Sleep timer: press the Sleep timer button to scroll through all the options and select the cancel option.

The remote control with the sleep timer button on the bottom left.



Night mode

In Night mode, your Dyson purifying humidifying fan will continue to monitor and respond to changes in air quality and temperature, but only using its quietest settings - and with its LCD screen dimmed.

If Auto purify mode or Auto humidify mode have been set, Night mode will reduce the airflow speed to a range from 1 to 4.

Personalize your Night mode settings in the Dyson Link app.

The remote control with the Night mode button on the right at the bottom.



Deep cleaning your machine

To always get the best performance from your Dyson purifying humidifying fan, it is important to carry out regular deep cleaning to remove any mineral build-up.

Before and after long periods where humidification is not used, we recommend you run an additional Deep clean cycle.

In hard water areas you may need to run the Deep clean cycle more frequently. We recommend you use filtered water to always get the best performance from your machine.

Your machine will alert you when it needs you to carry out a Deep clean cycle.

If you are connected to the Dyson Link app, you will receive a notification message.

If you are not using the Dyson Link app, the LCD screen on your machine will alert you and the Deep clean cycle button will light up.

To cancel the Deep clean cycle at any point, press and hold the Deep clean cycle button for five seconds.

Keep the cap dry

Keep the cap on the water tank dry when you run a Deep clean cycle or fill the tank. It contains power connections and should not be washed. If wet, wipe thoroughly with a dry cloth. Make sure the cap and connections are completely dry before refitting.

Step 1

Remove the water tank

Press the Deep clean cycle button on the front of your machine and your instructions will be shown on the LCD screen.

Push down on the Outer cover release buttons to remove the outer covers. The inner door will spring open. Put the Outer covers to one side as you carry out the Deep clean cycle.

Push down the Water tank release buttons on the sides of your machine.

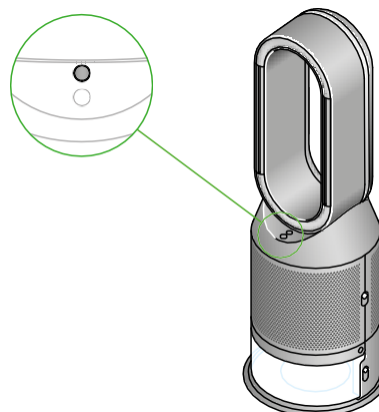
Slide the water tank out of your machine and unclip the cap.

Step 2

Remove the evaporator

Remove the evaporator from your machine, place it in the water tank and refit the cap.

The Deep clean cycle button can be located above the Standby button.



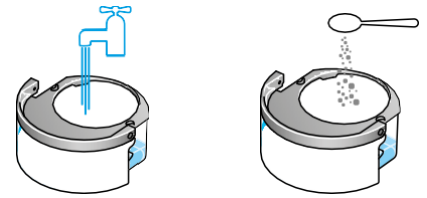
Step 3

Make a descaling solution

Carry the water tank by its handle to the tap.

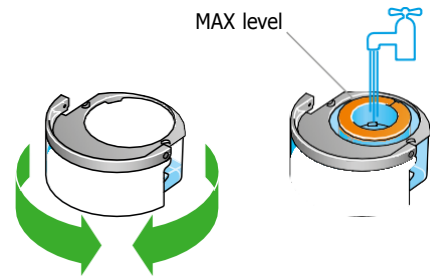
Remove the cap and evaporator. Fill the water tank halfway to the Max level with cold tap water.

Measure out 150g of citric acid and place it in the water tank.



Agitate gently until all the citric acid has dissolved.

Place the evaporator in the water tank. Fill the water tank to the Max level with cold tap water.



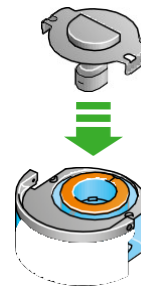
Step 4

Replace the cap

Replace the cap and secure the cap clips in place.

Wipe off any excess water to avoid drips.

Make sure the cap is completely dry. If wet, wipe thoroughly with a dry cloth.



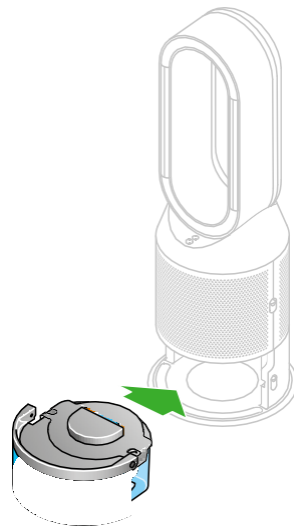
Step 5

Replace the tank

Slide the water tank back into your machine until it clicks securely in place.

When prompted by the LCD screen, press the Deep clean cycle button.

The Deep clean cycle will start and the LCD screen will show a countdown timer.

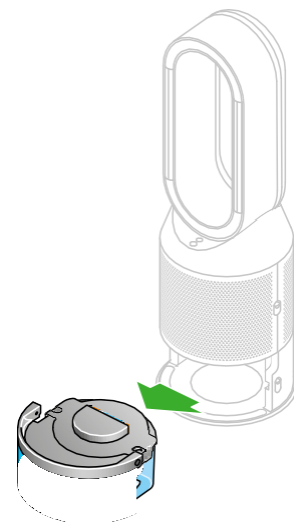


Step 6

Remove the water tank

When the LCD screen shows the Deep clean cycle is complete, push down the water tank release buttons on the sides of your machine.

Slide the water tank out of your machine. Carry the water tank by its handle to the tap.



Step 7

Rinse

Unclip the cap, take the evaporator out of the water tank and rinse under a cold tap.

Wipe away any excess water to avoid drips and place the evaporator to one side.

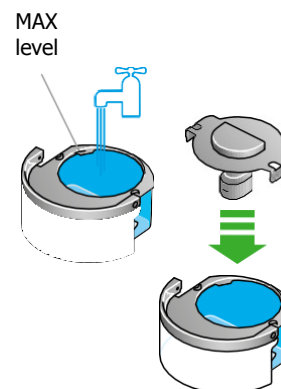
Rinse the water tank under a cold tap. Wipe the inside of the tank to remove any excess solution and any debris.



Step 8

Refill

Refill the water tank to the Max level and wipe off any excess water and replace the cap, making sure that the cap clips are secured.



Step 9

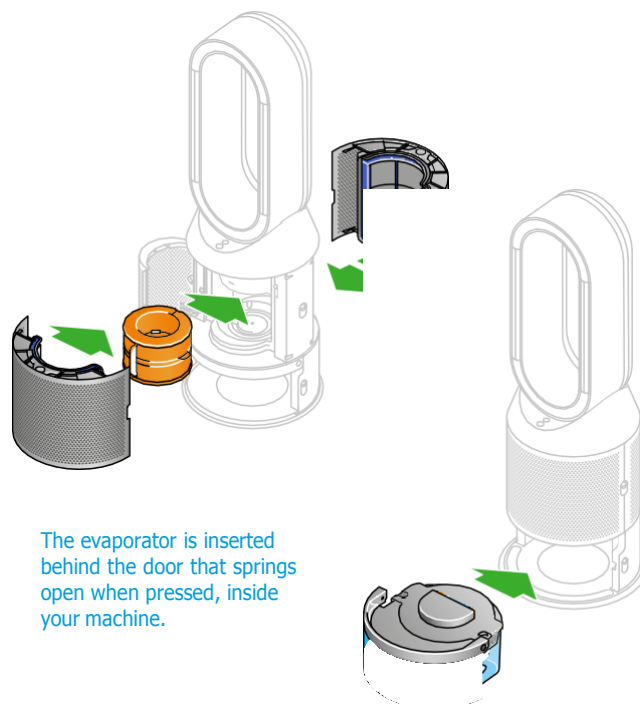
Reassemble

Push the evaporator back into your machine, making sure that it is securely in position.

Close the inner door and replace the outer covers.

Make sure the cap is completely dry. If wet, wipe thoroughly with a dry cloth.

Slide the water tank back into your machine and make sure it is securely in place.



Changing your HEPA+Carbon filter

The purifying humidifying fan with the filter covers open showing a HEPA plus carbon filter located in the filter covers and a catalytic filter. Arrows demonstrate that the catalytic filter is fitted directly to the base of the machine and the filter covers will need to be assembled onto the base of the machine.

Supplied with a HEPA+Carbon filter.

To change your HEPA+Carbon filter, push down on the buttons either side of your machine to release the outer cover. Push down on the tabs to remove the filter.

Push the replacement filter into the outer cover and make sure the tabs click into place.

Put the outer covers into position on your machine and push firmly until they both click securely into position.

Plug in and switch your machine, and reset your filter life.



Resetting your filter life

It's important to reset your filter life after you have replaced your filter.

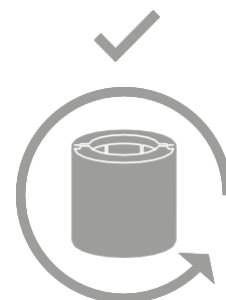
Press and hold the Night mode button on the remote control.

The LCD screen on your machine will count down from five, ending with default screen.

The filter life has been reset and your machine is ready to use.



5, 4, 3, 2, 1...



Looking after your machine

To always get the best performance from your Dyson purifying fan, it's important to regularly clean it and check for blockages.

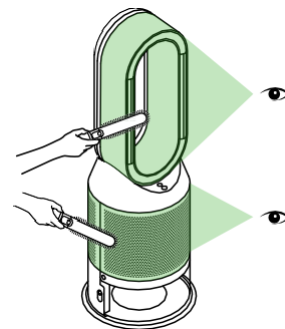
Cleaning your machine

If your machine is dusty, wipe with a damp lint-free cloth.

Look for blockages in the air inlet holes on the filter and the small aperture inside the loop amplifier.

Use a soft brush to remove dust and debris.

Don't use detergents or polishes to clean your machine.



Alerts

Continuous alert icon

Switch off and unplug your machine.

Leave for 10 seconds and then plug your machine back in and switch it on.

If the alert icon continues to show on the LCD screen, contact Dyson.



Temporary alert icon

If the alert appears on the LCD screen and then disappears, continue to use your machine.

If any other alert icons show on the LCD screen, contact Dyson for further advice.

Packaging:

Front:

DYSON PURIFIER HUMIDIFY + COOL
DOMESTIC
REGISTRATION NO. 34316
PEST CONTROL PRODUCTS ACT

READ LABEL AND OPERATING MANUAL BEFORE USING.

Kills 99.9% of bacteria in humidified water

KEEP OUT OF REACH OF CHILDREN.
See Operating Manual for additional Precautions and Warnings.

DYSON CANADA LIMITED
312 Adelaide Street West 7th Floor
Toronto, Ontario
M5V 1R2
CANADA
(312) 846-7797

Automatically purifies and hygienically humidifies for a healthier environment.

Traps pollutants and kills 99.9% of bacteria in humidified water to deliver cleaner, hydrated air

Purifying humidifying fan with HEPA H13 filtration

Smart home enabled
Control and monitor your air quality from anywhere using the Dyson Link app. And control hands-free with compatible voice services.

Up to 36 hours per refill
Hassle-free Deep clean cycle

Back:

Senses, captures and destroys
The purifier is fully sealed, so what goes inside stays inside.
Two phases of purification sit within our fully-sealed filtration and airflow system. To trap pollutants inside, removing them from the air you breathe.

Senses and reports automatically
Integrated sensor system constantly analyzes your air while our unique algorithm cross-checks data every second. It diagnoses your air at a molecular level, automatically reacting to purify and display live information on the LCD.

Real-time air quality is displayed on the LCD

- 24-hour review
- NO2 level

- PM2.5 level
- VOC level
- Humidity and temperature
- Filter life report

Smart home enabled

Control and monitor air quality by voice or app.

Gas sensor

Detects oxidizing gases and VOCs.

Temperature and humidity sensor

Monitors the room's temperature levels and relative humidity.

Particle sensor

Uses laser measurement to report on PM2.5 and PM10.

Activated carbon filter captures gases and odours.

HEPA filter captures 99.97% of pollutants as small as 0.3 microns.

Filter casing contains recycled plastic.

Side1:

Powerful projection and circulation

Air Multiplier™ technology generates the circulation power to draw pollutants into the filters from all around the room.

Dyson's latest purifiers automatically sense and remove dust, allergens and gases.

Mixes and circulates the air to project purified, humidified air throughout the whole room.

Purifies

Circulates purified air throughout the whole room.

Humidifies

Automatically maintains a comfortable level of moisture in the air.

Evaporatively cools you

Converts heat energy into a cool refreshing flow of air.

Dyson purifiers are tested beyond the industry standard.

CADR (Clean Air Delivery Rate) is a measure of purification in a small test chamber

Additional fan boosts circulation. Only one sensor measures air quality.

Dyson's POLAR test represents a real-size living space.

Dyson engineers developed the POLAR test measuring filtration, sensing and whole-room purification.

No additional fans.

Side 2:

Kills 99.9% of bacteria in humidified water.

Every drop of water is exposed to a powerful ultraviolet light, destroying 99.9% of bacteria. Cleansed water is then evaporated by the 3D air mesh, before hygienically humidified air is projected throughout the room.

Jet axis control

Two oscillators guide the airflow to cover a 90° range, projecting separately or in unison to enable different airflow modes.

Up to 36 hours of
hygienic humidification

An efficient water management system and a 5-litre water tank give you continuous humidification, without regular refilling.

UV-C LED

Kills 99.9% of bacteria in humidified water.

Reflective PTFE tube

Made from a highly reflective material. It mirrors UV light up and down the tube, to kill bacteria

Hassle-free Deep clean cycle

Hygienically eliminates limescale throughout the machine's water system. Activated at the touch of a button, it guides you through a simple step-by-step process.

Top:

Automatically purifies and hygienically humidifies for a healthier environment

Traps pollutants and kills 99.9% of bacteria in humidified water to deliver cleaner, hydrated air.

Purifying humidifying fan with HEPA H13 filtration

Smart home enabled

Control and monitor your air quality from anywhere using the Dyson Link app. And control hands-free with compatible voice services.

Up to 36 hours per refill
Hassle-free Deep clean cycle

Bottom:

Built-in cleaning cycle reminder

Hassle-free Deep clean cycle

Hygienically eliminates limescale throughout the machine's water system. Activated at the touch of a button, it guides you through a simple step-by-step process.

Cleans properly

Limescale is eliminated throughout the water system.

Powerful cleaning action

A centrifugal pump propels a natural descaler from the water tank, to cleanse the water system.

Easy clean

The evaporator fits easily into the water tank, so it can be cleaned during the Deep clean cycle.