

TEXT FOR STICKER LABEL, TO BE PRINTED AS A SINGLE PANEL

MAXFORCE® IC

Professional Cockroach Gel Bait

GROUP	4	INSECTICIDE
-------	---	-------------

COMMERCIAL

PASTE

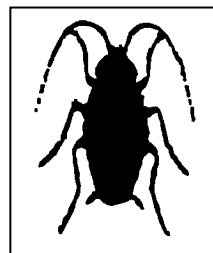
PRECAUTIONS: KEEP OUT OF REACH OF CHILDREN

DO NOT APPLY IN THE PRESENCE OF CHILDREN

DO NOT APPLY TO AREAS ACCESSIBLE TO CHILDREN

Wear chemical resistant gloves during application and clean up activities.

Avoid contamination of food and feed.



FIRST AID:

IF SWALLOWED: Call a poison control centre or doctor immediately for treatment advice. Do not induce vomiting unless told to do so by a poison control centre or doctor. Do not give **any** liquid to the person. Do not give anything by mouth to an unconscious person.

IF IN EYES: Hold eye open and rinse slowly and gently with water for 15–20 minutes. Remove contact lenses, if present, after the first 5 minutes, then continue rinsing eye. Call a poison control centre or doctor for treatment advice.

IF ON SKIN OR CLOTHING: Take off contaminated clothing. Rinse skin immediately with plenty of water for 15–20 minutes. Call a poison control centre or doctor for treatment advice.

Take container, label or product name and Pest Control Product Registration Number with you when seeking medical attention.

GUARANTEE: Imidacloprid.....2.15%

Contains (1,2-benzisothiazolin-3-one at 0.022%, 2-methyl-4-isothiazolin-3-one at 0.000034% and 5-chloro-2-methyl-4-isothiazolin-3-one at 0.0001%) or (1,2-benzisothiazolin-3-one at 0.0027% and 2-methyl-4-isothiazolin-3-one at 0.00041% and 5-chloro-2-methyl-4-isothiazolin-3-one at 0.0012%) as preservatives.

REGISTRATION NUMBER 27605 PEST CONTROL PRODUCTS ACT

READ THE LABEL AND ATTACHED LEAFLET BEFORE USING

KEEP OUT OF REACH OF CHILDREN

NET CONTENTS: 30 gram

Not labeled for individual sale.

MAXFORCE is a registered trademark of Bayer.

Bayer CropScience Inc.*
Suite 200, 160 Quarry Park Blvd. S.E.
Calgary, Alberta
T2C 3G3

Product Information: 1-888-283-6847
www.bayercropscience.ca

*Bayer Environmental Science
A Division of Bayer CropScience

MaxForce® IC

Professional Cockroach Gel Bait

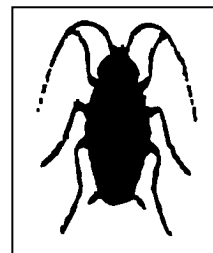
GROUP	4	INSECTICIDE
-------	---	-------------

READY-TO-USE

Insecticidal bait for the control of cockroaches

Paste

Only to be used by individuals holding an appropriate pesticide applicator certificate or license recognized by the provincial/territorial pesticide regulatory agency where the application occurs



COMMERCIAL

GUARANTEE: Imidacloprid.....2.15%

Contains (1,2-benzisothiazolin-3-one at 0.022%, 2-methyl-4-isothiazolin-3-one at 0.000034% and 5-chloro-2-methyl-4-isothiazolin-3-one at 0.0001%) or (1,2-benzisothiazolin-3-one at 0.0027% and 2-methyl-4-isothiazolin-3-one at 0.00041% and 5-chloro-2-methyl-4-isothiazolin-3-one at 0.0012%) as preservatives.

REGISTRATION NUMBER 27605 PEST CONTROL PRODUCTS ACT

READ THE LABEL AND LEAFLET BEFORE USING

KEEP OUT OF REACH OF CHILDREN

NET CONTENTS: 30 g/tube; (Five 30-gram Tubes Per Box) 150 g, (8 Boxes Per Case) 1200 g
DO NOT SELL TUBES SEPERATELY (CARTRIDGES)



Bayer CropScience Inc.*
Suite 200 160 Quarry Park Blvd.S.E.
Calgary, Alberta
T2C 3G3

Product Information: 1-888-283-6847

www.bayercropscience.ca

*Bayer Environmental Science
A Division of Bayer CropScience

NOTICE TO USER: This pest control product is to be used only in accordance with the directions on the label. It is an offence under the *Pest Control Products Act* to use this product in a way that is inconsistent with the directions on the label. The user assumes the risk to persons or property that arises from any such use of this product.

DIRECTIONS FOR USE

IMPORTANT

Only to be used by individuals holding an appropriate pesticide applicator certificate or licence recognized by the provincial/territorial pesticide regulatory agency where the application occurs.

DO NOT APPLY IN THE PRESENCE OF CHILDREN.

DO NOT APPLY TO AREAS ACCESSIBLE TO CHILDREN

Read the entire **DIRECTIONS FOR USE** before using MAXFORCE IC PROFESSIONAL COCKROACH GEL BAIT. **DO NOT** formulate this product into other end-use products.

GENERAL INFORMATION

CHARACTERISTICS

MAXFORCE IC PROFESSIONAL COCKROACH GEL BAIT is an insecticidal bait for the control of cockroaches (including German, American, Brown-Banded, and Oriental cockroaches.)

MAXFORCE IC PROFESSIONAL COCKROACH GEL BAIT can be applied in difficult places and is compatible with different types of surface.

SITUATIONS OF USE

Apply as an indoor spot and/or crack and crevice application to spaces within structures and their walls and ceilings. Such structures include, but are not limited to,

- residential (e.g. houses, apartments),
- commercial, industrial, and institutional buildings (e.g. restaurants, supermarkets, offices, hospitals, nursing homes, schools, warehouses, hotels, motels and utilities),
- agricultural structures (e.g. barns, livestock housing facilities), pet kennels, zoos, and
- on various modes of transport (e.g. aircraft, buses, trucks, trailers, rail cars, and marine vessels).

MAXFORCE IC PROFESSIONAL COCKROACH GEL BAIT can be applied without any particular preliminary preparation; therefore, normal working activities can continue during its application. Cleaning of all areas prior to use of MAXFORCE IC PROFESSIONAL COCKROACH GEL BAIT will increase levels of control. Any foodstuffs infested with insect pests should be removed and destroyed.

HOW TO USE

Attach a pre-filled reservoir of Maxforce IC Professional Cockroach Gel Bait to a bait injector. Remove the reservoir outlet cap, attach the dispensing tip, and then apply the product as instructed under "RECOMMENDED APPLICATION– RATES". Trapping techniques or spot flushings will aid in determining the focal areas of cockroach activity.

MAXFORCE IC PROFESSIONAL COCKROACH GEL BAIT may be applied as a spot and/or crack and crevice treatment.

Avoid placing baits on surfaces that are openly exposed such as the junction between wall and floor. Refer to USE LIMITATIONS.

Spot Treatment: Apply gel in **out of the way locations** where cockroaches occur e.g., under refrigerators, ovens and sinks, behind furniture and cabinets, near water heaters, behind microwave ovens, garbage bins.

Crack and Crevice Treatment: Bait should be applied **into cracks and crevices**, in which cockroaches hide or through which they may enter the building. Such openings commonly occur at expansion joints, between different elements of construction, between, behind or under various types of equipment such as cabinets, refrigerators, sinks, stoves, dishwashers, and through floors, doors, windows, walls and ceilings and around plumbing pipes. These openings may lead to voids such as hollow walls, hollow equipment legs and bases, utility entrances, electrical conduit, junction and switch boxes, and wall and floor drain exits. Apply MAXFORCE IC PROFESSIONAL COCKROACH GEL BAIT by placing the applicator tip directly (about 1 cm) into cracks and crevices and other openings or voids where cockroaches may hide or harbour and deposit the bait as multiple placements or as a continuous strip as instructed under "RECOMMENDED APPLICATION - RATES".

DO NOT use this product where a possibility of a shock hazard exists.

Care should be taken to avoid depositing the product onto open or exposed surfaces. If gel contacts an exposed surface, MAXFORCE IC PROFESSIONAL COCKROACH GEL BAIT can be removed from the treated surface with a sponge soaked in a 5% sodium chloride (kitchen salt) solution.

During follow-up visits inspect bait placements and reapply as instructed under "RECOMMENDED APPLICATION-RATES".

RECOMMENDED APPLICATION - RATES

Pest	Rate	Remarks
<p><u>Cockroaches</u> German, Brown-Banded, American, or Oriental cockroaches</p>	<p><u>Light infestations</u> 1 placement per m² or linear metre</p> <p><u>Moderate to Heavy infestations</u> 2 placements per m² or linear metre</p> <p>1 placement = approximately 0.1g of gel, applied as a 5 mm diameter ball (about the size of a small pea) or as a strip about 2.5 cm long</p>	<p>Re-assess treated areas one month after initial baiting to evaluate whether additional treatment is required. Bait placements should be replenished when consumed or at least every three months as long as monitoring indicates that pest populations persist.</p>

FOOD / FEED HANDLING ESTABLISHMENT TREATMENTS

Application within food/feed areas of food/feed handling establishments is limited to crack and crevice treatment only.

Food/feed areas include areas for receiving, storage, packing (canning, bottling, wrapping, boxing), preparing edible waste storage, and enclosed processing systems (mills, dairies, edible oils, syrups). Serving areas are also considered a food/feed area when food is exposed and facility is in operation.

Follow application procedure as described under ‘Crack and Crevice Treatment’.

USE LIMITATIONS

Ensure that the product is placed in areas that are inaccessible to children, pets and other animals.

DO NOT allow gel to contact food, livestock feed or their water.

DO NOT apply bait to areas where food/feed, food utensils and food packaging materials or food processing surfaces may become contaminated.

DO NOT use this product where a possibility of a shock hazard exists.

DO NOT place gel on surfaces that are regularly washed, including cracks and crevices in tops of tables, food/feed preparation and prepared food holding surfaces as bait may be removed by washing.

DO NOT apply bait to surfaces where the temperature exceeds 54°C as bait may run. Examples include, but are not limited to, portions of stoves, ovens, grills, fume hoods, heat lamps, coffee urns, steam tables, toasters, fryers, dishwashers and hot water pipes.

Care should be taken to avoid depositing the product onto open or exposed surfaces. If gel contacts an exposed surface, remove gel and wash exposed surface. MAXFORCE IC PROFESSIONAL COCKROACH GEL BAIT can be removed from the treated surface with a sponge soaked in a 5% sodium chloride (kitchen salt) solution.

DO NOT apply MAXFORCE IC PROFESSIONAL COCKROACH GEL BAIT to areas that have been recently sprayed with insecticides, and **DO NOT** spray insecticides over gel, as it may cause the bait to become repellent.

Applications to textiles or fabrics may cause discoloration or staining.

RESISTANCE MANAGEMENT RECOMMENDATIONS

For resistance management, please note that MAXFORCE IC PROFESSIONAL COCKROACH GEL BAIT contains a Group 4 insecticide. Any insect population may contain individuals naturally resistant to MAXFORCE IC PROFESSIONAL COCKROACH GEL BAIT and other Group 4 insecticides. The resistant individuals may dominate the insect population if this group of insecticides is used repeatedly in the same location. Other resistance mechanisms that are not linked to site of action, but specific for individual chemicals, such as enhanced metabolism, may also exist. Appropriate resistance management strategies should be followed.

To delay insecticide resistance:

- Where possible, rotate the use of MAXFORCE IC PROFESSIONAL COCKROACH GEL BAIT or other Group 4 insecticides with different groups that control the same pests.
- Insecticide use should be based on an Integrated Pest Management (IPM) program that includes scouting, record keeping, and considers cultural, biological and other chemical control practices.
- Monitor treated pest populations for resistance development.
- Contact your local extension specialist for any additional pesticide resistance-management and/or IPM recommendations for the specific site and pest problems in your area.
- For further information or to report suspected resistance contact Bayer CropScience via internet at www.bayercropscience.ca or phone 1-888-283-6847.

PRECAUTIONS

KEEP OUT OF REACH OF CHILDREN

DO NOT APPLY IN THE PRESENCE OF CHILDREN

DO NOT APPLY TO AREAS ACCESSIBLE TO CHILDREN

Wear chemical resistant gloves during application and clean up activities.

Avoid contamination of food and feed.

CAUTION: Causes moderate eye irritation. Avoid contact with eyes or clothing.

Wash thoroughly with soap and water after handling.

FIRST AID

IF SWALLOWED: Call a poison control centre or doctor immediately for treatment advice. Do not induce vomiting unless told to do so by a poison control centre or doctor. Do not give **any** liquid to the person. Do not give anything by mouth to an unconscious person.

IF IN EYES: Hold eye open and rinse slowly and gently with water for 15–20 minutes. Remove contact lenses, if present, after the first 5 minutes, then continue rinsing eye. Call a poison control centre or doctor for treatment advice.

IF ON SKIN OR CLOTHING: Take off contaminated clothing. Rinse skin immediately with plenty of water for 15–20 minutes. Call a poison control centre or doctor for treatment advice.

Take container, label or product name and Pest Control Product Registration Number with you when seeking medical attention.

TOXICOLOGICAL INFORMATION: This product contains petroleum distillates. Vomiting may cause aspiration pneumonia. No specific antidote is available. Treat the patient symptomatically.

STORAGE AND DISPOSAL

DO NOT contaminate water, food, or feed by storage or disposal.

PESTICIDE STORAGE: Store in a cool, dry place and in such a manner as to prevent cross contamination with other pesticides, fertilizers, food and feed. **DO NOT** store in direct sunlight. Store in original container and out of the reach of children, preferably in a locked storage area.

PESTICIDE DISPOSAL: For information on disposal of unused, unwanted product, contact the manufacturer or the provincial regulatory agency. Contact the manufacturer and the provincial regulatory agency in case of a spill, and for clean-up of spills.

CONTAINER DISPOSAL: Do not destroy carton while product still remains. Completely empty cartridge through normal use. Do not reuse empty cartridges – Do not replenish empty cartridges. Dispose of container in accordance with provincial requirements.

ACCIDENTAL SPILLS: Handle and open container in a manner as to avoid spillage. If the container is leaking or material is spilled for any reason or cause, carefully remove gel and wash exposed surface with a sponge soaked in a 5% sodium chloride (kitchen salt) solution. Refer to Precautionary Statements on label for hazards associated with the handling of this material. Do not walk through spilled material. Dispose of pesticide as directed above. In spill or leak incidents, keep unauthorized people away. You may contact the 24-hour Emergency Phone number for decontamination procedures or any other assistance that may be necessary. The Bayer 24-hour Emergency Phone number is 1-800-334-7577.

MAXFORCE is a registered trademark of the Bayer Group.

This label transcript service is offered by the Pest Management Regulatory Agency to provide efficient searching for label information. This service and this information do not replace the official hard-copy label. The PMRA does not provide any guarantee or assurance that the information obtained through this service is accurate, current or correct, and is therefore not liable for any loss resulting, directly or indirectly, from reliance upon this service.