

2013-4373
2014-04-03

CONTRAC with Lumitrack

KILLS RATS & MICE

SOLID
Kills Warfarin Resistant Norway Rats

Norway rats and house mice may consume a lethal dose in one feeding with first dead rodents appearing four or five days after treatment begins.

REGISTRATION NO.: **31296** PEST CONTROL PRODUCTS ACT

COMMERCIAL

WARNING



POISON

GUARANTEE

Bromadiolone.....0.005%

Warning, contains the allergens wheat and soy.

Contains potassium sorbate at 1.0 % as a preservative.

READ THE LABEL BEFORE USING

(see back panel for additional precautionary statements)

KEEP OUT OF REACH OF CHILDREN

Only to be used by certified pest control operators, farmers and persons authorized in government-approved pest control programs.

NET CONTENTS: 1.8 – 8.2 kg

Manufactured by: Bell Laboratories, Inc., 3699 Kinsman Blvd., Madison, WI 53704 USA
Tel: 608-241-0202

PRECAUTIONS: KEEP OUT OF REACH OF CHILDREN, PETS AND LIVESTOCK. May be harmful or fatal if swallowed or absorbed through the skin. Chemical-resistant gloves must be worn when handling product and when disposing of dead rodents, unconsumed bait and empty containers. Avoid contact with eyes, skin or clothing. Wash hands before eating, drinking, chewing gum, using tobacco or using the toilet. Wash skin thoroughly with soap and water after handling. Wash contaminated clothing, separately from other laundry, with soap and water before reuse. **KEEP AWAY FROM FEED AND FOODSTUFFS.**

All handlers must wear long-sleeved shirt and long pants, shoes plus socks, and chemical resistant gloves when handling this product.

FIRST AID:

If in eyes, hold eye open and rinse slowly and gently with water for 15–20 minutes. Remove contact lenses, if present, after the first 5 minutes, then continue rinsing eye. Call a poison control centre or doctor for treatment advice.

If on skin or clothing, take off contaminated clothing. Rinse skin immediately with plenty of water for 15–20 minutes. Call a poison control centre or doctor for treatment advice.

If swallowed, call a poison control centre or doctor immediately for treatment advice. Have person sip a glass of water if able to swallow. Do not induce vomiting unless told to do so by a poison control centre or doctor. Do not give anything by mouth to an unconscious person.

For all cases of human ingestion, immediately notify a physician or poison control centre. If a pet or livestock poisoning is suspected, immediately contact a veterinarian. Take container, label or product name and Pest Control Product Registration Number with you when seeking medical attention.

TOXICOLOGICAL INFORMATION: Vitamin K₁ in the form of intramuscular or subcutaneous injections, or by oral ingestion are suggested remedial treatments for anticoagulant poisoning. The severity of the case measured by establishing prolonged prothrombin times (P.T.) will determine appropriate therapy. Monitoring P.T. will indicate the necessity of repeated treatments.

ENVIRONMENTAL HAZARDS: This product is toxic to fish and wildlife. Keep out of lakes, streams or ponds.

DIRECTIONS FOR USE: Use bait to control the Norway rat (*Rattus norvegicus*), Roof rat (*Rattus rattus*), and House mouse (*Mus musculus*) indoors and outdoors within 15 metres of buildings (dwellings, farm buildings, food service establishments (non-food areas), granary bins (empty), processing plants (feed, food, in non-food areas) and storage areas (non-food)). Rodenticide bait can be placed in tamper-resistant bait stations along the fence line of properties, outside of the 15-metre limit but within 100 metres of buildings, if the station is securely fastened (e.g. nailed down) to the fence or the ground.

Food Processing, Food Manufacturing, Food Storage and Food Service Areas:

For areas not directly related to food processing: Use only in non-food or non-feed area where feed, food, packaging and handling equipment are never opened or exposed. For areas where feed or food is processed, served, or stored: In meat and food processing plants (processing areas), use only when plant is not in operation. Remove or cover all food, packaging material and utensils before placing bait in baiting stations. Remove all baits and dead rodents before reuse of the plant (processing areas include storage and service). Users should remove clothing immediately if pesticide gets inside. Then wash skin thoroughly and put on clean clothing

USE LIMITATIONS: Bait **MUST** be placed either in tamper-resistant bait stations or in locations not accessible to children, pets, livestock or non-target wildlife. **DO NOT** place bait in areas where there is a possibility of contaminating food or surfaces that come in direct contact with food.

Bait stations (**tier 3**) used for the placement of rodenticide bait indoors, in locations not accessible to pets or livestock must have the following characteristics: (1) be constructed of high-strength material (e.g., metal or injection molded plastic) and resistant to destruction by children; (2) have an entrance designed so that children cannot reach the bait; (3) have internal structure which prevents bait from being shaken loose; (4) have an access panel that fastens securely and locks (e.g., metal screw or padlock); and (5) bear the product name, active ingredient, guarantee, registration number, “WARNING POISON”, and the skull and crossbones symbol.

Bait stations (**tier 2**) used for the placement of rodenticide bait indoors, in locations accessible to pets or livestock must have the following characteristics, in addition to those outlined above for tier 3 bait stations: (1) resistant to destruction by non-target animals; and (2) have an entrance designed so that non-target animals cannot reach bait.

Bait applied outdoors and above-ground **MUST** be placed in bait stations.

Bait stations (**tier 1**) used outdoors, above-ground, in locations accessible to children, pets and non-target wildlife must have the following characteristics, in addition to those outlined above for tier 2 and 3 bait stations: (1) be resistant to destruction or weakening by elements of typical non-catastrophic weather (such as, snow, rain, extremes of temperature and humidity, direct sunshine, etc.).

SELECTION OF TREATMENT AREAS: Determine areas where rats and/or mice will most likely find and consume the bait. Generally, these areas are along walls, by gnawed openings, in or beside burrows, in corners and concealed places, between floors and walls, or in locations where rodents or their signs have been observed. Remove as much food as possible.

APPLICATION DIRECTIONS:

RATS: Place 3 to 16 pieces of CONTRAC with LUMITRACK blocks at intervals of 4.5 to 9 metres per placement. Maintain an uninterrupted supply of fresh bait for 10 days or until signs of rat activity cease.

HOUSE MICE: Place one piece of CONTRAC with LUMITRACK blocks at intervals of 2.5 to 3.5 metres per placement. Two pieces may be needed at points of high mouse activity. Maintain an uninterrupted supply of fresh bait for 15 days or until signs of mouse activity cease.

RATS AND MICE: Replace contaminated or spoiled bait immediately. To prevent reinfestation, eliminate food, water, and harborage as much as possible. If reinfestation does occur, repeat treatment. Where a continuous source of infestation is present, establish permanent bait stations and replenish bait as needed.

DISPOSAL: Do not reuse empty container. Dispose of unused or spoiled bait in accordance with local requirements. Follow provincial instructions for any required cleaning of the container prior to its disposal. Make the empty container unsuitable for further use. Dispose of the container in accordance with provincial requirements. For more information on the disposal of unused, unwanted product and cleanup of spills, contact the provincial regulatory agency or the Manufacturer.

Rodent Disposal: Dispose of dead rodents in garbage or by burying.

STORAGE: Store in cool, dry place away from other chemicals and food or feed. Store product not in use, in original container, in a secure location inaccessible to children and non-target animals.

NOTICE TO USER: This pest control product is to be used only in accordance with the directions on the label. It is an offence under the *Pest Control Products Act* to use this product in a way that is inconsistent with the directions on the label. The user assumes the risk to persons or property that arises from any such use of this product.

OPTIONAL MARKETING STATEMENTS:

Mold and Moisture Resistant

All-Weather Blox

Ready to Use Blox

Includes Lumitrack

With Lumitrack

With Special Lumitrack

Contains Lumitrack Additive

Lumitrack Luminesces Under Black Light in Low Light Conditions

Lumitrack is visible under black light in low light conditions

Lumitrack makes rodent feces glow under black light in low light conditions

Lumitrack helps track rodent movement and identify harborage areas in low light conditions

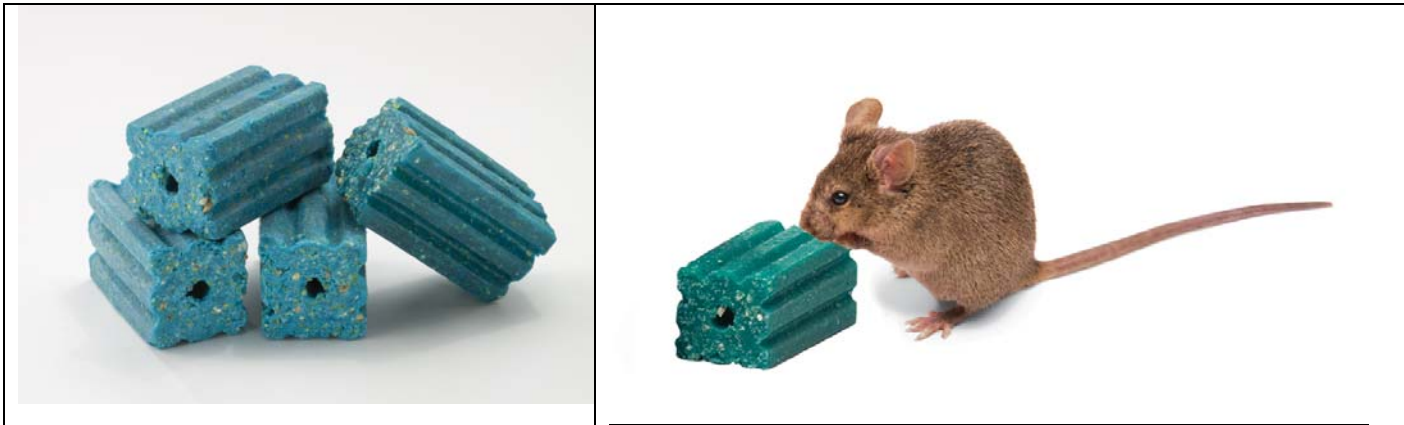
Lumitrack increases serviceability in low light conditions

Lumitrack helps determine amount of bait consumption in low light conditions
Lumitrack makes bait easier to monitor in low light conditions
Lumitrack improves serviceability by aiding in visual identification in low light conditions
Lumitrack simplifies identification of rodent pathways in low light conditions
Lumitrack aids in locating entry holes for rodent proofing in low light conditions

OPTIONAL MARKETING STATEMENTS (CONT'D):

All-Weather Conrac with Lumitrack has an updated preservative system
All-Weather Conrac with Lumitrack contains a preservative system which helps maintain freshness
All-Weather Block Bait
Ready to Use 28 gram Bait Chunx
All-weather formula
With bromadiolone
Multi-edge shape gives rodents gnawing edges
Made in USA
Bait Chunx
All-Weather

OPTIONAL GRAPHICS WITHOUT TEXT:



082013