

05-MAR-2010
2009-4779

Treats 250 m²

**NURSERYLAND
MOSS CONTROL
with 11% Ferrous Sulphate**

Controls moss in lawns
Adds Magnesium and Iron

DOMESTIC

REG. NO. 25251 P.C.P. ACT

GUARANTEE: Ferrous Sulphate 11%

CAUTION

POISON

KEEP OUT OF REACH OF CHILDREN
READ THE LABEL BEFORE USING

20 kg

Nurseryland
20503 Lougheed Highway
Maple Ridge, BC
V2X 2P9

DIRECTIONS FOR USE:

1. Measure moss affected area.
2. Moisten affected area thoroughly.
3. Ensure spreader is shut. Fill spreader allowing 0.8 kg per 10 square metres.
4. Spread the product so that ½ is spread in one direction and the remaining ½ in a perpendicular direction (See Diagram A). Shut spreader off when turning or stopping. Avoid contact with cement patios, walkways, etc.

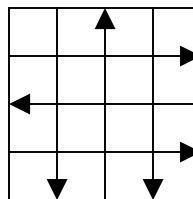


DIAGRAM 'A'

5. Water in thoroughly after application.
6. Wash equipment and all exposed skin following application.
7. Do not mow lawn for 48 hours following application.
8. Repeat application in 3-4 weeks if moss persists (application should be followed by an application of dolomitic limestone).

CAUTION: Do not use on cement products, such as sidewalks, patios, blocks, stucco, etc. Will also stain marble, sandstone, limestone and related products. Rinse exposed areas with clear water. May corrode bare metal.

PRECAUTIONS: KEEP OUT OF REACH OF CHILDREN. Harmful if swallowed. Avoid contact with eyes, skin and clothing. Avoid breathing dust. Wash exposed skin with soap and water after use.

ENVIRONMENTAL HAZARDS: Do not contaminate lakes, streams or ponds.

FIRST AID: If swallowed, call a poison control centre or doctor immediately for treatment advice. Have a person sip a glass of water if able to swallow. Do not induce vomiting unless told to do so by a poison control centre or doctor. Do not give anything by mouth to an unconscious person. **If in eyes,** hold eye open and rinse slowly and gently with water for 15-20 minutes. Remove contact lenses, if present, after the first 5 minutes, then continue rinsing eye. Call a poison control centre or doctor for treatment advice. **If on skin or clothing,** take off contaminated clothing. Rinse skin immediately with plenty of water for 15-20 minutes. Call a poison control centre or doctor for treatment advice. Take container, label or product name and P.C.P. Registration Number with you when seeking medical attention.

TOXICOLOGICAL INFORMATION: Treat symptomatically.

STORAGE: Store in original container with the bag tightly closed in a dry place and away from children and pets. Store away from feed and seed.

DISPOSAL: Do not reuse empty container. Discard empty container in household garage.

NOTICE TO USER: This pest control product is to be used only in accordance with the directions on the label. It is an offence under the Pest Control Product Act to use this product in a way that is inconsistent with the directions on the label. The user assumes the risk to persons or property that arises from any such use of this product.

This label transcript service is offered by the Pest Management Regulatory Agency to provide efficient searching for label information. This service and this information do not replace the official hard-copy label. The PMRA does not provide any guarantee or assurance that the information obtained through this service is accurate, current or correct, and is therefore not liable for any loss resulting, directly or indirectly, from reliance upon this service.